

# COLLABORATIVE FANUC PALLETIZER

A turn-key palletizer using the new FANUC CRX collaborative robot.

# PALLETIZ<sup>CRX</sup>

ONExia Robotics

The PalletizCRX is designed and built by ONExia, a robotics integrator located in Pennsylvania.



## Flexible Automation

The PalletizCRX is a fully integrated, collaborative solution for FANUC users looking for a flexible alternative to standard industrial palletizing robots.

### SYSTEM FEATURES

The PalletizCRX requires no programming and can be deployed to packaging lines in under an hour.

- **Minimal footprint** - no guarding or caging needed
- **Portable** - easily moved with a forklift or pallet jack
- **Collaborative** - full rating for entire system
- **Quick deployment** - requires an outlet and an air line
- **Continuous operation** - palletize to both sides

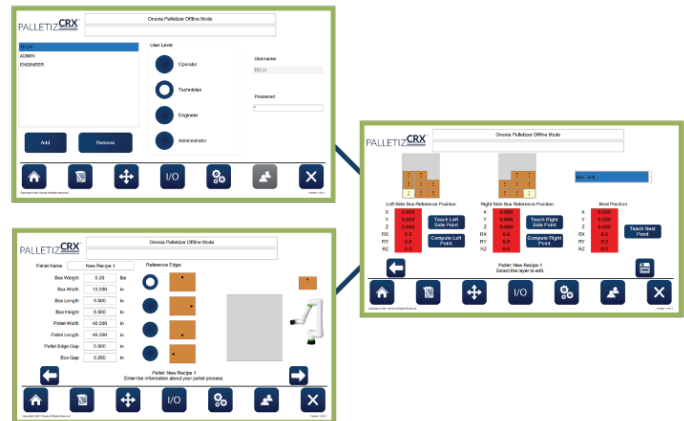
## No Programming

The PalletizCRX comes with our custom drag-and-drop palletizing software preloaded on the touchscreen interface.

### SOFTWARE FEATURES

The PalletizCRX can be quickly adjusted for new pallet configurations as production demands change.

- **Simplified interface** - control the entire system through the embedded touch screen
- **Drag-and-drop software** - build pallets with no programming needed
- **Pallet library** - save and recall 100's of pallets for even quicker changeover



## System Specifications

Each PalletizHD system includes the palletizer base and a FANUC CRX-10iA/L Collaborative Robot.

### MACHINE DETAILS

- Lifter travel: up to 27.375" (robot specific)
- Mobility: fork pockets for pallet jack or forklift
- Steel enclosure (HMI): not rated
- HMI specs: 12.1" touchscreen
- Pallet sensors: Photoeyes for pallet presence
- Power: single phase, 115 VAC, 15 amps
- Air consumption: 80 psi / 2.5 cfm

### CYCLE TIME

- Up to 7 picks per minute\*
- \*Higher rates may require additional safety

### PALLET DIMENSIONS

- Maximum pallet height: 96"+ (application specific)
- Maximum pallet width: 48"
- Maximum pallet depth: 42"
- Slip sheets: Yes

### CARTON/PAYLOAD

- Minimum box size: weight dependent
- Maximum weight: 58 lbs (+/- tooling weight)
- Maximum box size: weight dependent

### STANDARD SAFETY

- The PalletizCRX runs collaboratively out of the crate with no additional safety required.

### ADDITIONAL SAFETY OPTIONS

- Area Scanners (up to 4)\***
    - Slows robot if someone is in work area
  - Hard Guarding\***
    - Complete guarding for work-cell
- \*All available for additional cost